

Nauvoo

The Way We Were

1505 Mulholland
 1525 Mulholland
 1545 Mulholland
 1575 Mulholland
 1595 Mulholland

Overview of the 1500 Block, North side of Mulholland

1891 Plat: There were abutted buildings mid block: one frame; the other, brick. By 1912, There were nine buildings, six of them labeled “dwellings” on this block.

“1505” Mulholland

1891 Plat: Site Empty
1912 Sanborn Map: Frame Dwelling
2010: Vacant Building

1874 *Nauvoo Independent*
 (newspaper’s first location)
 Newspaper merged with
Nauvoo Rustler in 1924.

1920s – 1930s **Burtin’s Creamery and Poultry**

1950s **Gobac’s Sinclair Station**

Present Vacant Building

1525 Mulholland

1891 Plat: Site Empty
1912 Sanborn Map: Dry Goods and Grocery
2010: Vacant Building

1891 – 1944 **Schneider and Hummel**
 Dry Goods and Grocery Store

1944 Building sold to Namon Laubersheimer

1951 – 19__ **Laubersheimer’s Grocery Store (Namon)**

Present Vacant Building

1. 1891 Plat and 1912 Sanborn Maps were used as baselines for building locations. They are available for viewing at the Nauvoo Historical Society’s Weld House Museum, 1380 Mulholland.

2. Addresses in quotation marks indicate no existing structure at this location in 2010.

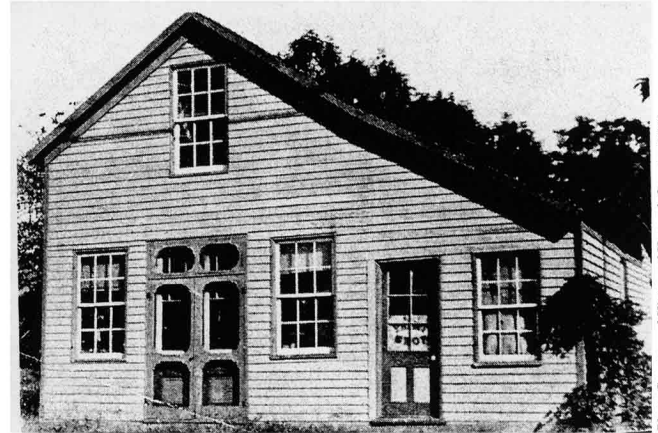


Photo Courtesy of History of Hancock County, 1974

c. 1874 The Nauvoo Independent newspaper’s first location was on the corner. In 1924, it merged with the Nauvoo Rustler newspaper and continued in business until 1974. Publishers George and Mike Baumert, Jr., were born and raised in the house across the street to the west.

Sometime in the 1900’s, after a fire destroyed his previous location on the “Flats”, J.B. Eid opened a paint shop in this general location. In the 1920’s, Andre Burtin had a store that specialized in cream and poultry. John Gobac’s Sinclair Station was here in the 1950’s.

1525 Mulholland



Photo courtesy of Western Illinois University

Location of Schneider & Hummel store, built in 1891. The Namon Laubersheimers purchased the building in 1944.

In 1874, John G. Schneider opened a mercantile store with Henry Bruegger (whom he later bought out). It was located in a building to the east in the middle of the block where Schneider also lived with his family. In 1891, he went into business with Reuben Hummel, his brother-in-law, and they built a one-story building on this site. They carried shoes, dry goods, oil, and gas (from the pump seen in the picture above) as well as salt, oyster shells, mixed chicken feed, and groceries. The adjacent cemented-over building to the east was used as a storage facility.

1545, 1575, 1595 Mulholland

1535 Mulholland

1891 Plat: Site Empty
1912 Sanborn Map: Blacksmith
2010: Vacant Building

Present Vacant Building

1545 Mulholland

1891 Plat: Unidentified Abutted Buildings
1912 Sanborn Map: Dwelling
 (Abutted Buildings)
2010: Insurance Office

187_- __ Waterman/Schneider Residence

1874 – 1890 Schneider’s Mercantile Store

1930s Gus Lange’s Blacksmith Shop
 (Located in this general area, if not at this location)

1992–Present Hancock County Insurance Agency

1575 Mulholland

1891 Plat: Site Empty
1912 Sanborn Map: Frame Dwelling (West)
 Brick Dwelling (East)
2010: Vacant Building

c.1912 – 1920s Eid’s Feed Mill
 (along with building to west)

1595 Mulholland

1891 Plat: Site Empty
1912 Sanborn Map: Brick Dwelling
Present: The Mayfly Gift Shop

1595 Mulholland

Originally, there was a residence (Wm. Bicker’s) at this location. It was razed and replaced with a carwash before present building was built.

(1525 Continued from side 1)

Over time, partnerships changed in John Schneider’s and Reuben Hummel’s line: to John’s son Wesley and to Reuben’s son Wallace, the latter continuing in the business until his death in 1944. The building was sold to Namon and Joyce Laubersheimer in 1951. They continued in the grocery business until 19__, adding a second floor residence at some time.

(Namon’s grandfather, John, had run a grocery store, “Laubersheimer’s,” at 1265 Mulholland in the late 1890’s.)

1545 Mulholland

Looking west from the middle of the north 1500 Block, this early photo shows the unidentified frame building noted in the 1891 Plat and 1912 Sanborn Map to the far right. The attached brick structure (not shown) is to the east (R.) was the former home of a Mrs. Waterman and her niece, Louise, future wife of John Schneider. Schneider’s first business, as well as his residence, was located in this building, which has served as a residence for most of its life until the present insurance agency purchased the building in 1992.

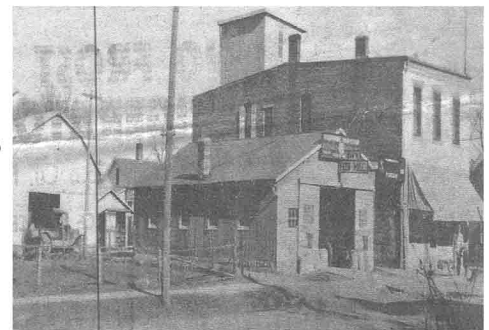
Notes: Also, according to an 1874 Atlas of Hancock County, F. Argast and P. Wiesner had a business in this general area. Wiesner was a cabinet and furniture maker. However, it is not presently known if he worked at his craft at this location.



Photo courtesy of Nauvoo Historical Society

1575 Mulholland

Eid’s Feed Mill (with awning) on the far right. Building in the center was gone by the 1940’s.



Newspaper Scan

Often referred to as the “Honeymoon Flat,” apparently because so many couples started out married life at this location, the building saw few businesses over the years. The only remembered established businesses were Eid’s (Joseph J.) Feed Mill c. 1912-1920’s (along with a former building to the east) and a heating business run by Alman Myers and son Denny c. 1950’s-1960’s.